

January 2009 UUFLG Member Survey Report

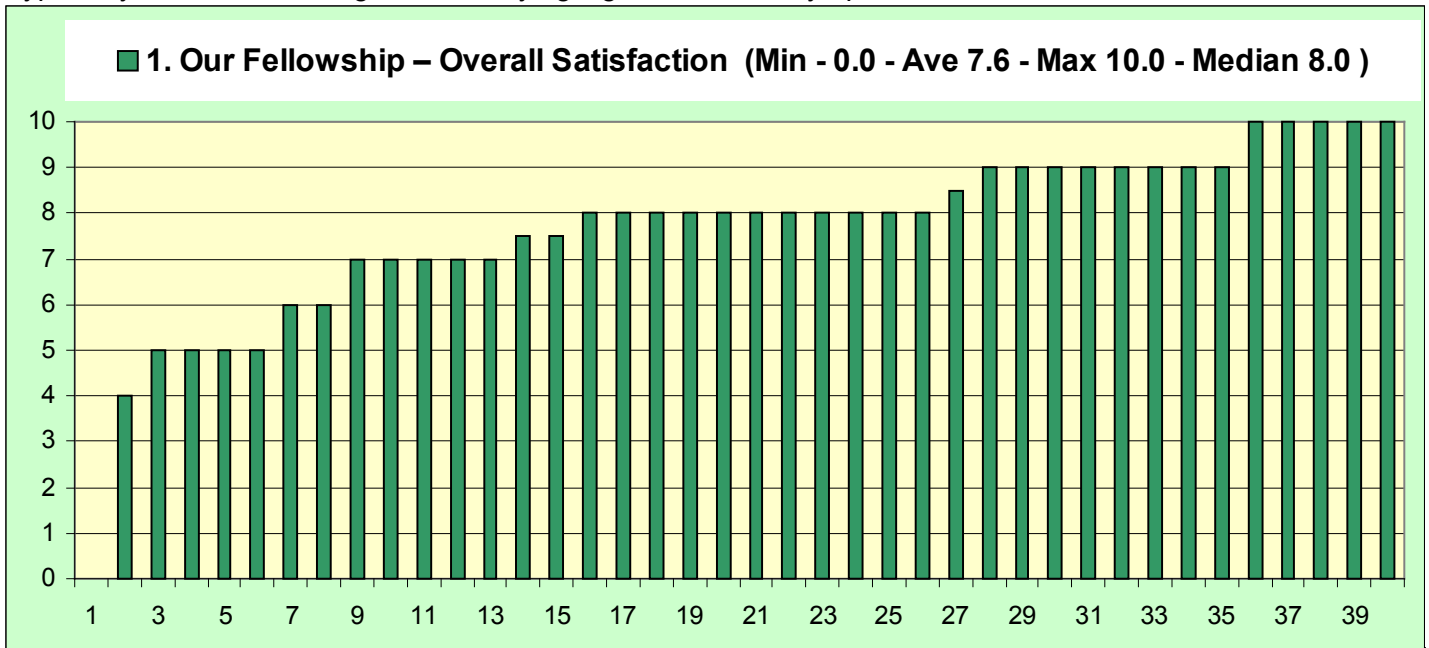
There were 40 responses to the UUFLG survey distributed to Members in mid December, 2008. Not all responders included responses to all 11 questions. Distribution of numeric responses are shown below for each of the questions, followed in each case by a summary of written comments. If a "0" response is shown at the left of the charts it indicates that an actual "0" was entered. If a "0" response is shown at the right of the chart it indicates the entry was left blank.

Degree of satisfaction was rated from:

"0" – TOTAL DISSATISFACTION to "10" – TOTALLY SATISFIED

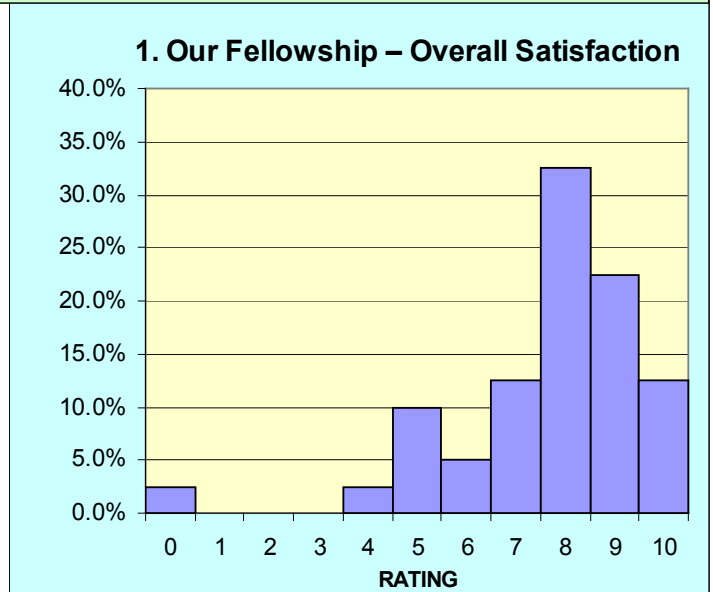
All numeric entries have been sorted to show distribution and do not correlate to responses shown for other questions – e.g. response number 1 for question 1 is not necessarily from the same person as response 1 for any other question.

A second graph is also shown for each question showing the percentage of those responding who rated the Fellowship at which level. The data presented in each of the two graphs is the same but the second graph type may be more meaningful in identifying significant minority opinions.

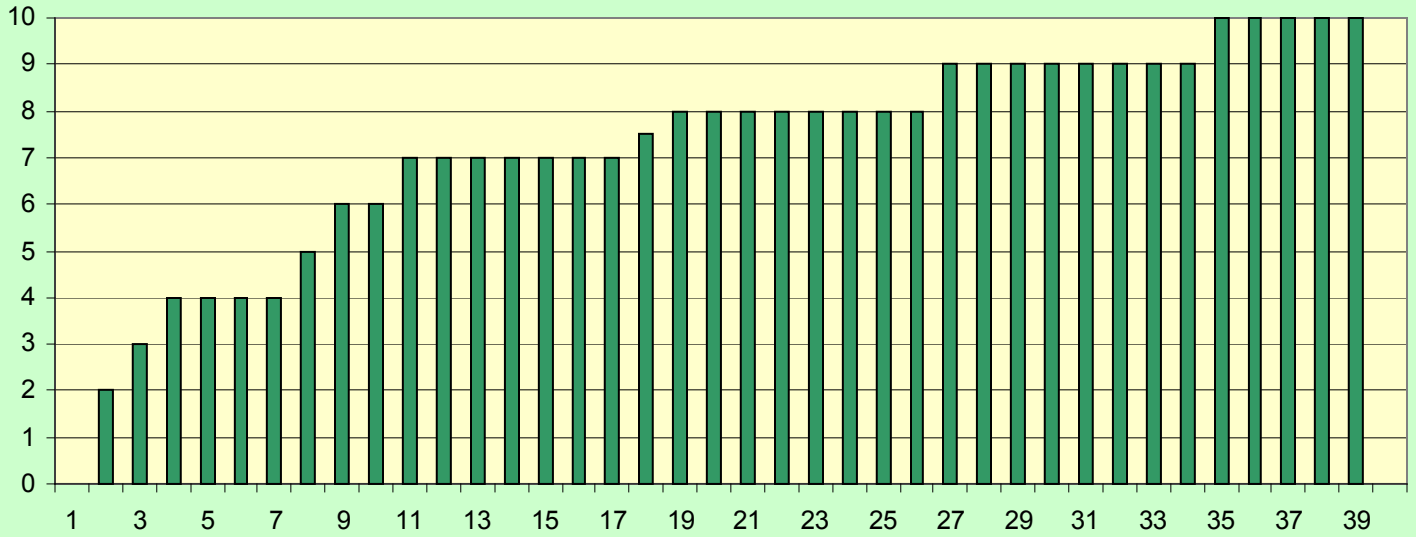


1. Our Fellowship – Overall Satisfaction

Of the 12 written comments, six were positive, one negative and five, in one form or another, expressed a need for broader member involvement in the Fellowship funding and operation. The one negative entry related primarily to dissatisfaction with Sunday Services



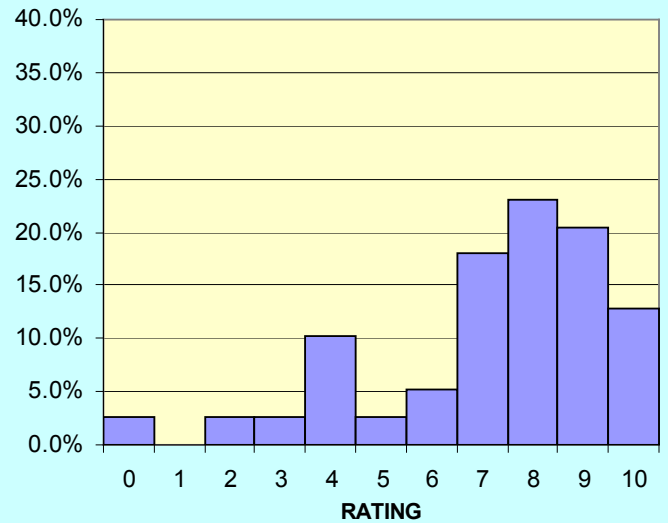
■ 2. Sunday Services (Min - 0 - Ave 7.2 - Max 10 - Median 8.0)



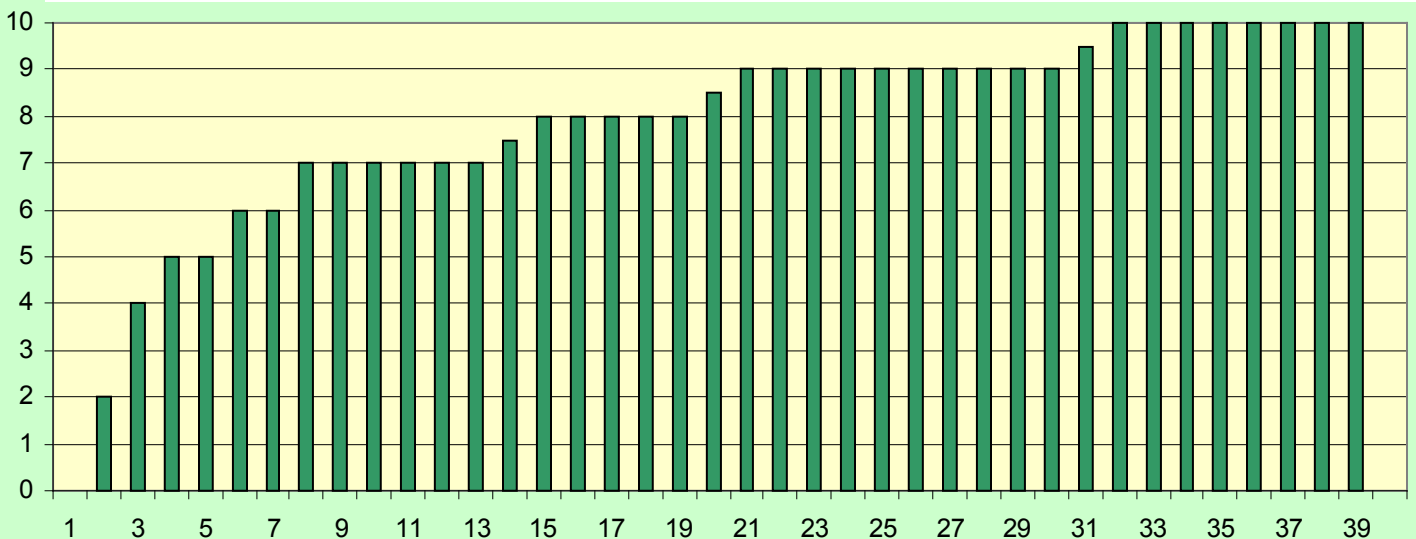
2. Sunday Services

There were 16 written entries to this question, one negative, with the others about equally split between compliments and suggestions for improvement. The negative comment considered the services to be uninspiring. The suggestions asked for improvements in intergenerational services, better guest speakers and more inspirational services.

2. Sunday Services

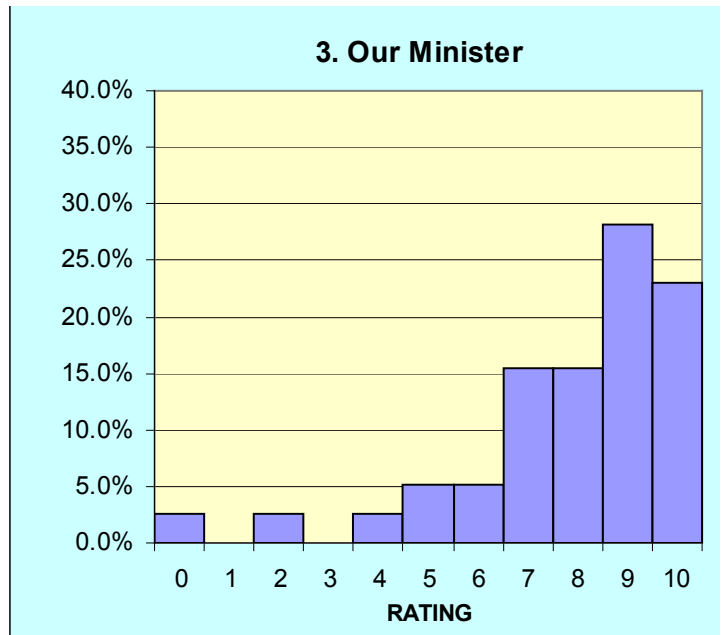


■ 3. Our Minister (Min - 0 - Ave 7.8 - Max 10 - Median 8.5)

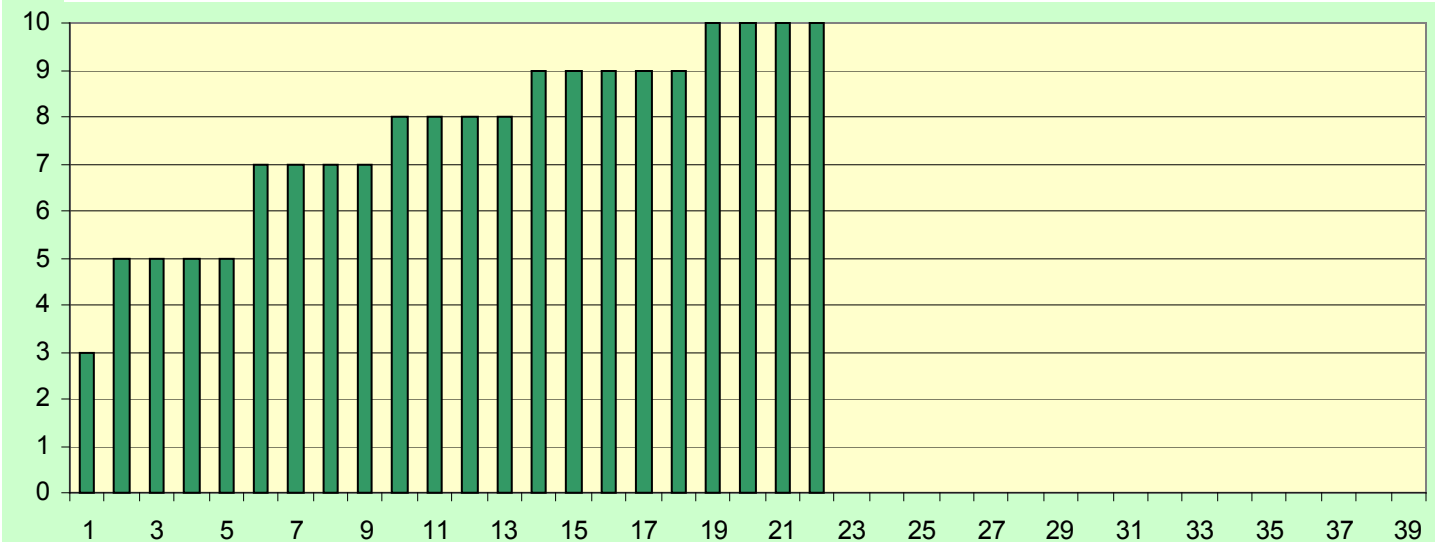


3. Our Minister

Of the 16 written entries for this area, over 50% were positive, two were on the negative side and the others had both positive remarks as well as suggestions for improvement. The negative comments asked for more inspirational services. Suggestions for improvement related primarily to a desire for stronger leadership

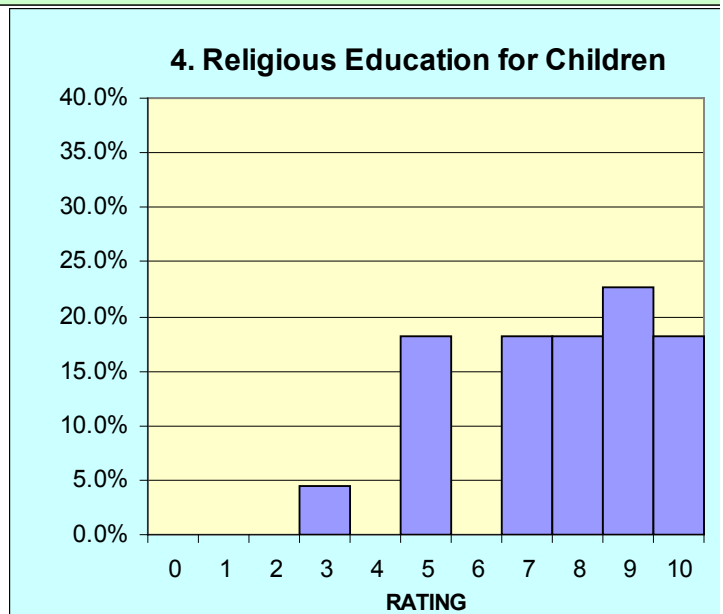


4. Religious Education for Children (Min - 3 - Ave 7.6 - Max 10 - Median 8.0)

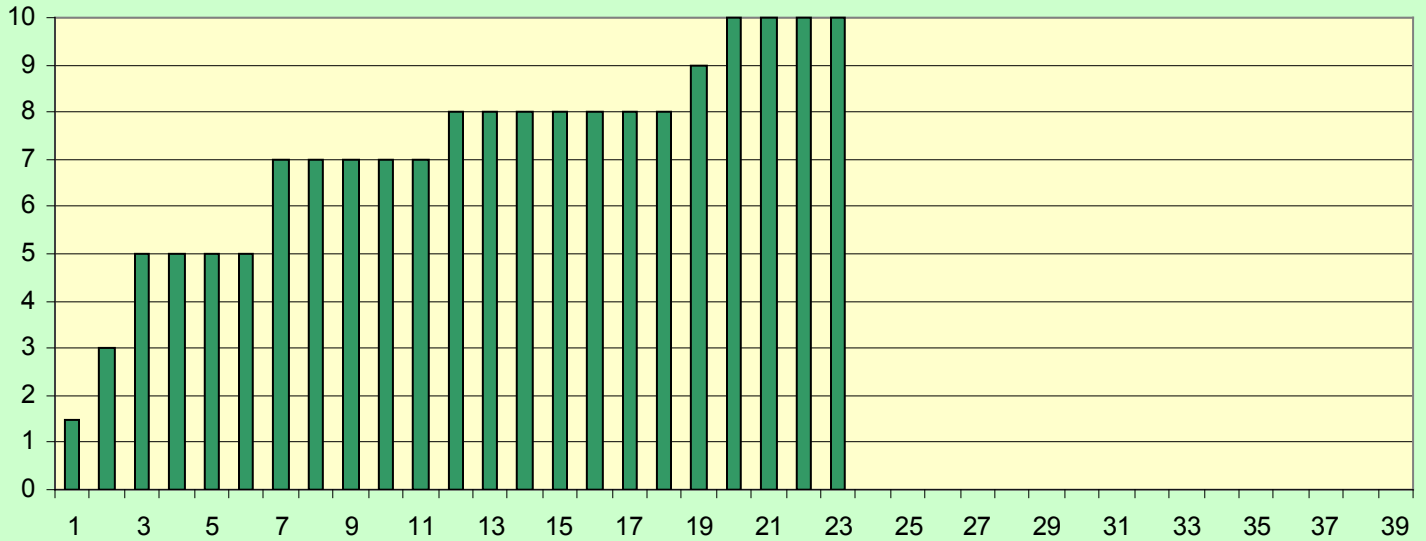


4. Religious Education for Children

There were 10 written responses to this question, most complementary. Four responses mentioned the lack of older children and teens and lack of programs for them.



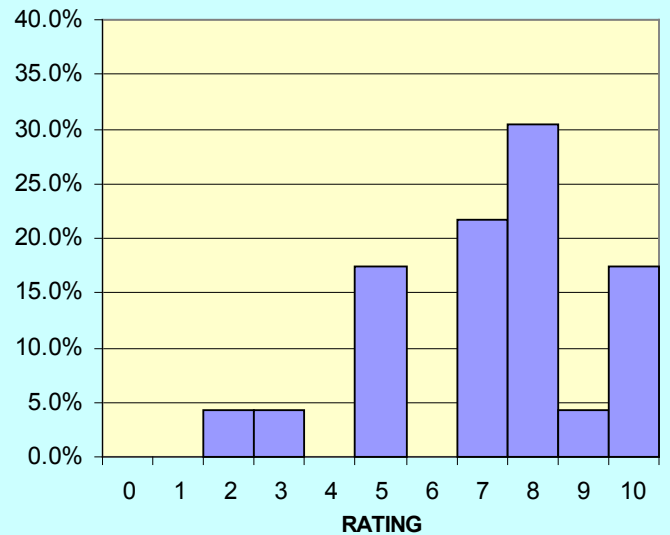
5. Religious Education for Adults (Min - 2 - Ave 7.2 - Max 10 - Median 8.0)



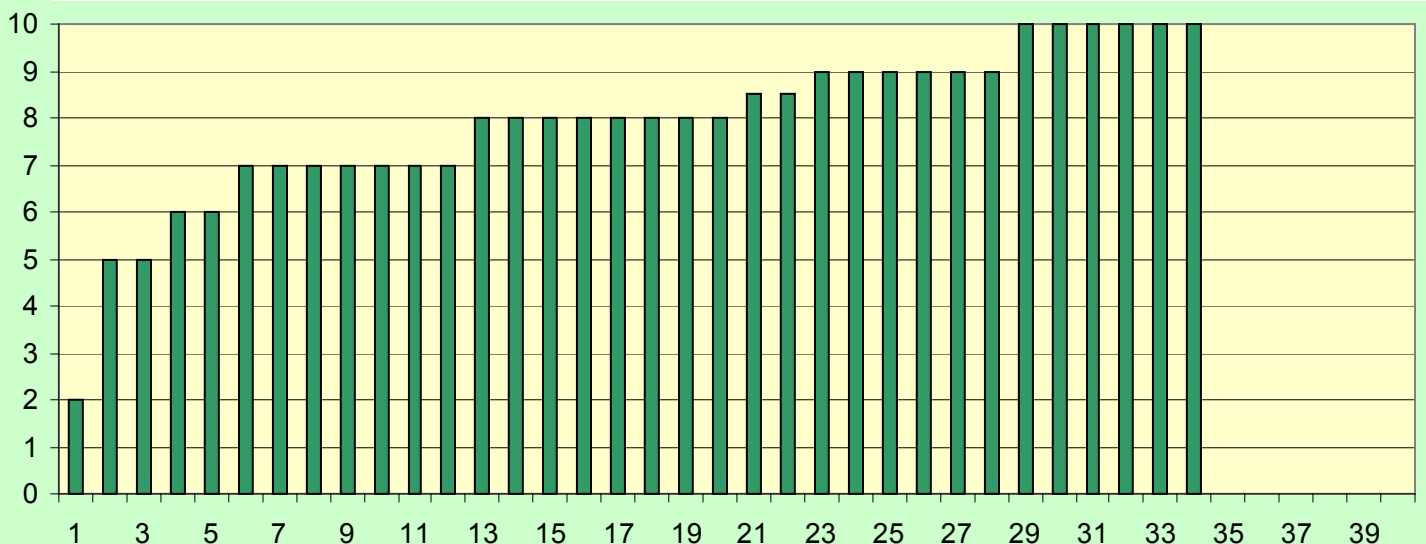
5. Religious Education for Adults

Most of the nine written comments were complimentary, however there were several suggestions for improvements. Four comments asked for a broader range of adult classes including secular topics, forums and lay lead discussions in a variety of areas. There were also a few comments about lack of publicity and cancellation of scheduled classes.

5. Religious Education for Adults



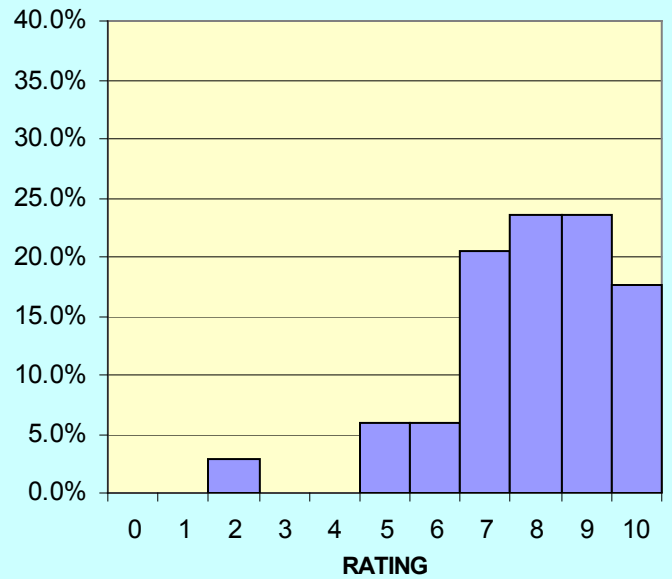
6. Board of Trustees and governance (Min - 2 - Ave 7.9 - Max 10 - Median 8.0)



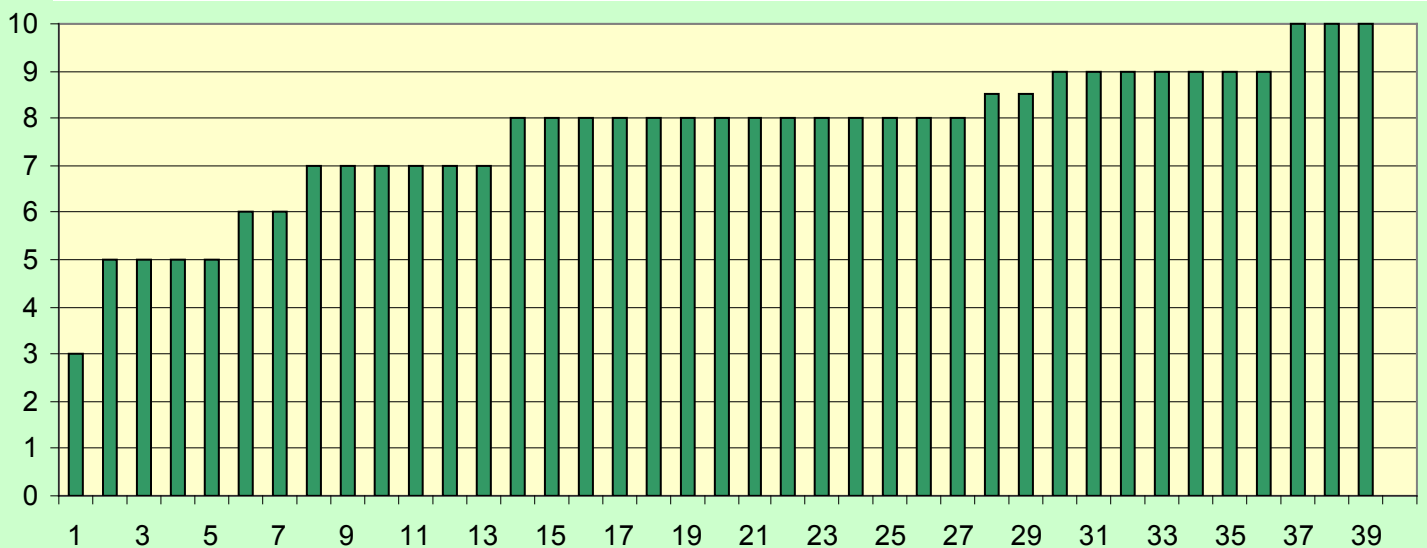
6. Board of Trustees and governance

Fifty percent of the responses to this question asked for better communication from the Board to the congregation and between committees. The remainder of comments contained in the 10 written entries was complementary except for an expressed desire for a more unified approach in addressing Fellowship problems.

6. Board of Trustees and governance



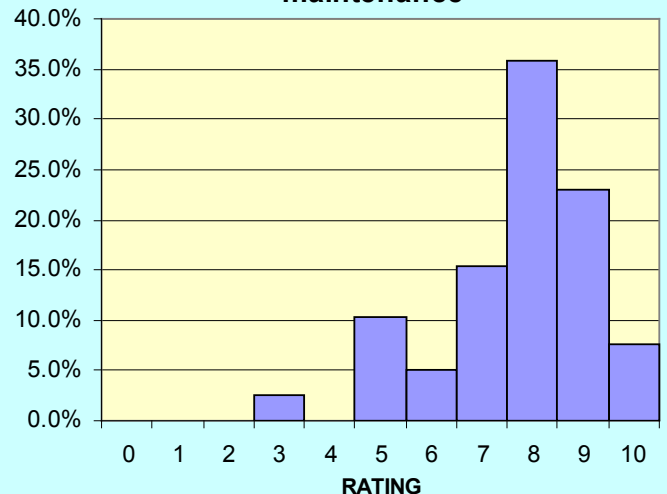
7. Fellowship building, facilities and maintenance (Min - 3 - Ave 7.7 - Max 10 - Median 8.0)



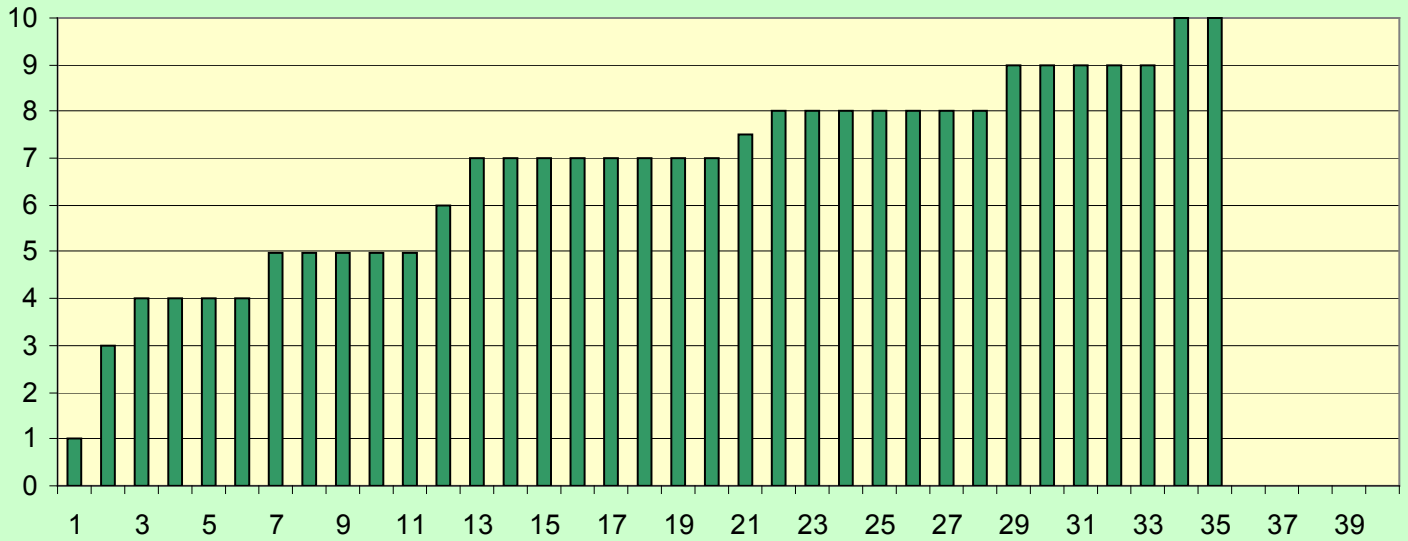
7. Fellowship building, facilities and maintenance

There were 16 written entries for this question, about half of which expressed need for specific upgrades and/or concern in addressing deferred maintenance. Six entries were positive and several commented on lack of budget for this area. A few commented on lack of space and there were three specific complements on the Member's pictures in the hall.

7. Fellowship building, facilities and maintenance



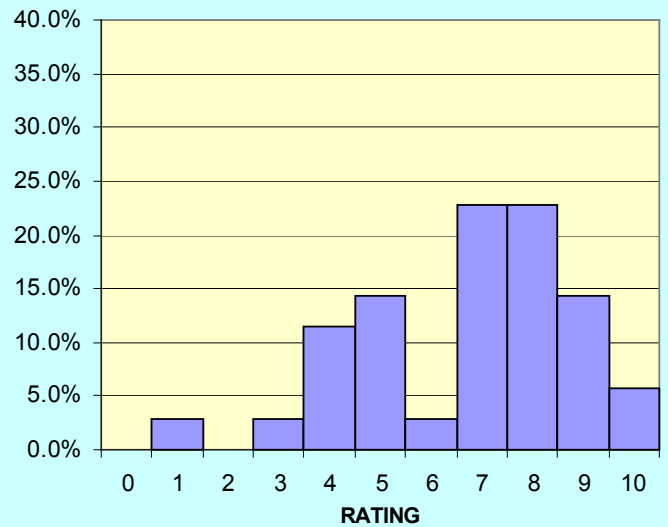
8. Fellowship finances and fundraising (Min - 1 - Ave 6.7 - Max 10 - Median 7.0)



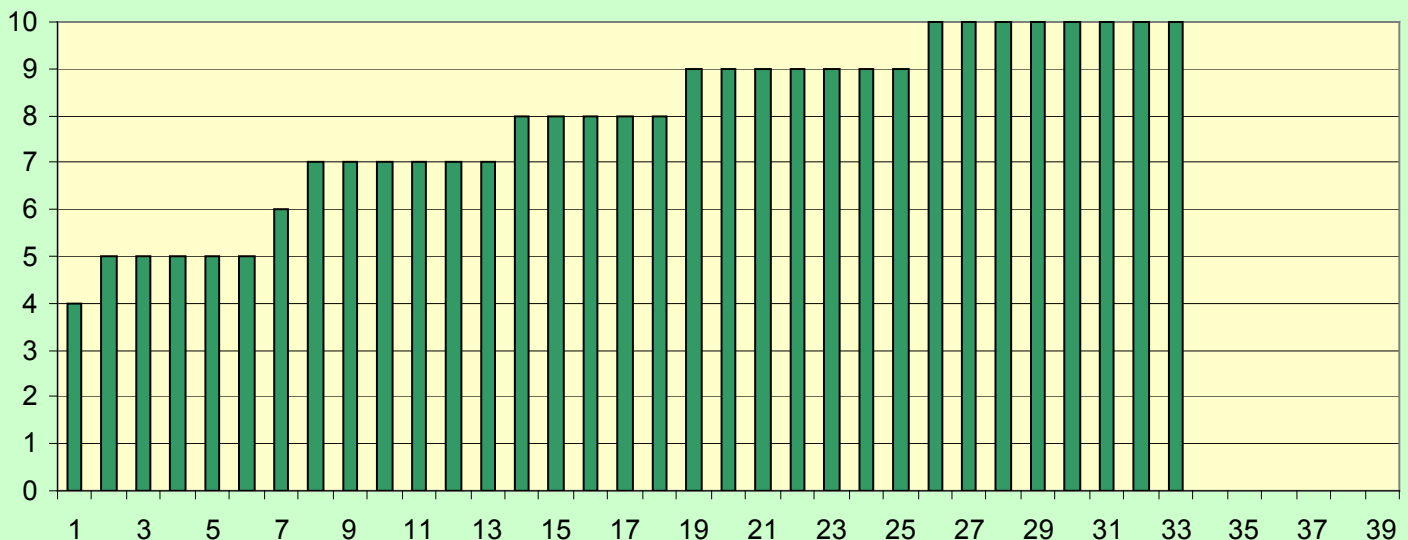
8. Fellowship finances and fundraising

Half of the total of 17 written entries for this question related in one way or another to suggestions for more aggressive fund raising. Another three asked for more emphasis and discussion on endowments and three recommended trying to draw income from outside sources. Other comments expressed understanding of the difficulty of operating in today's economy and noted there is good and open management of Fellowship expenses.

8. Fellowship finances and fundraising

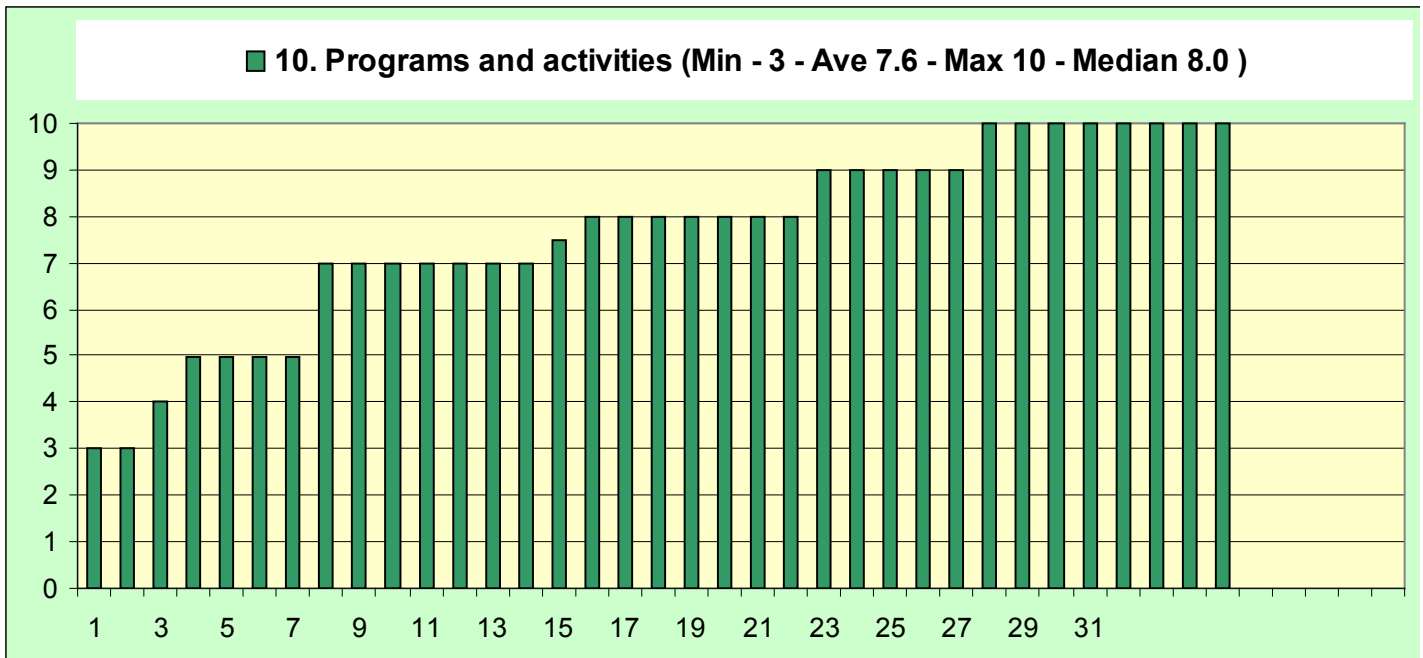
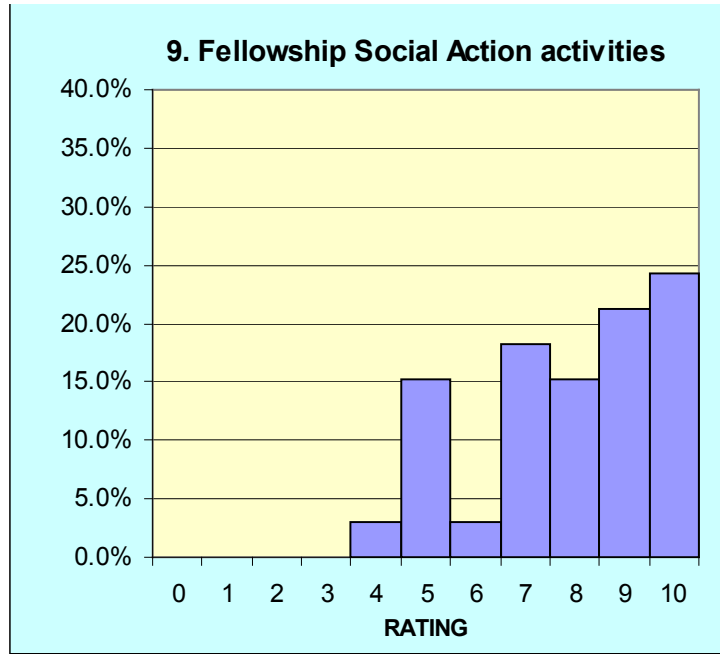


9. Fellowship Social Action activities (Min - 4 - Ave 7.9 - Max 10 - Median 8.0)



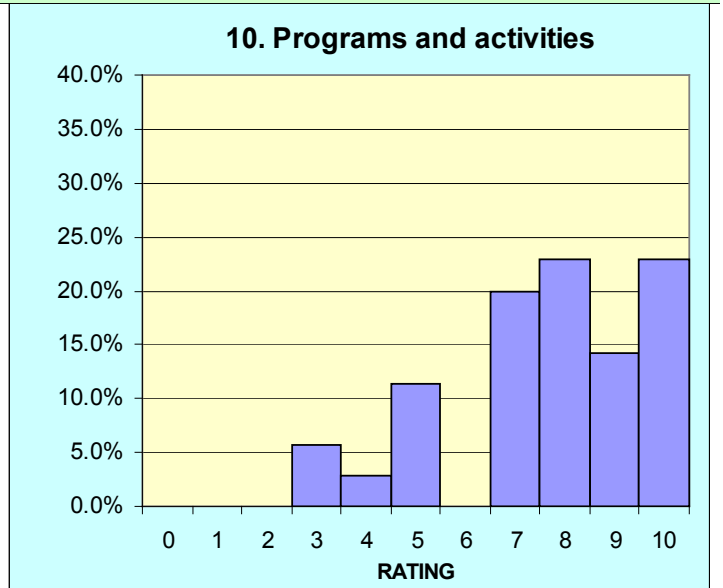
9. Fellowship Social Action activities

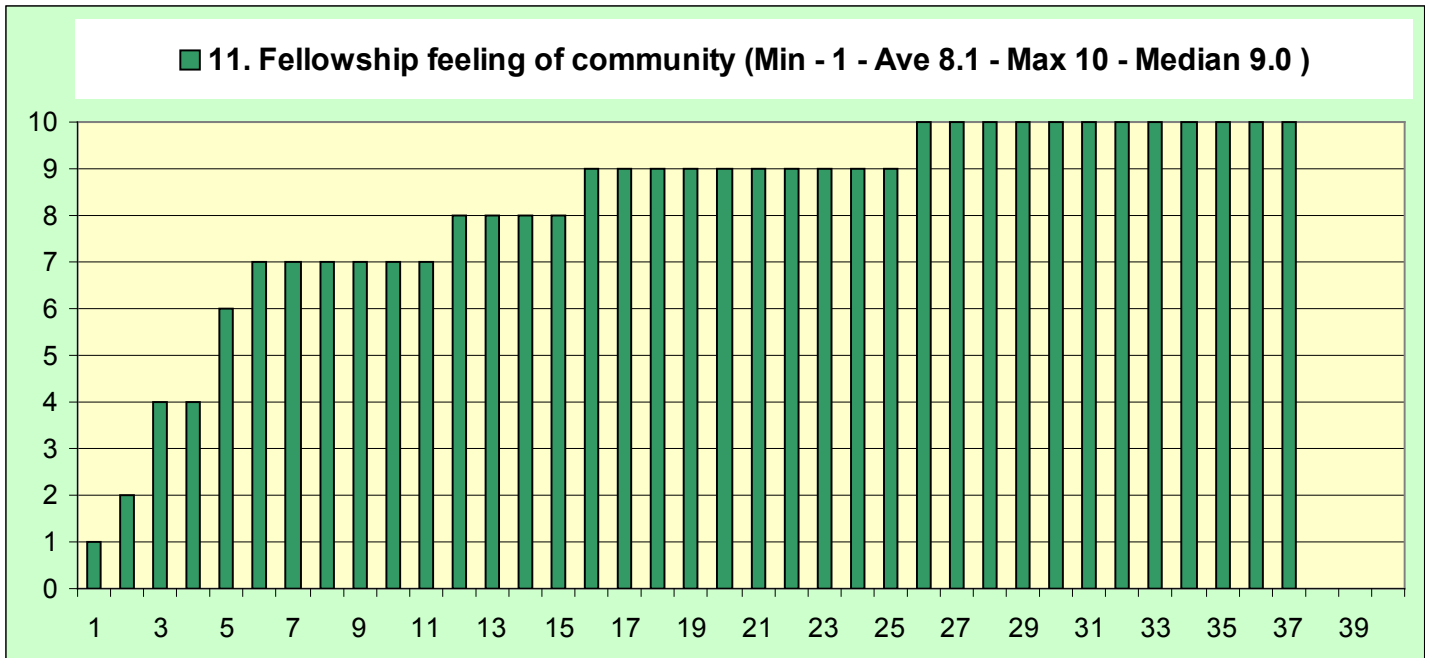
Half of the 14 written entries for this question commented on the large number of activities for the size of the Fellowship. However, there was a concern that selection of the activities may not represent interests of all Members. There were four requests for more activities (e.g. involving families and direct local.)



10. Programs and activities

There were 10 written entries with three primary themes: a) we can improve with a broader offering and more group activities; b) we need to publicize activities much better and c) we are improving with an already large selection of activities.





11. Fellowship feeling of community

This question had the highest average rating of all the questions, which was reflected within the 14 written entries. Eleven entries were positive, one was negative and two expressed concern with growth and sustaining the community.

